



In the heart of magnificent Clearwater Beach lies a property that can only be described as spectacular, the Hilton Clearwater Beach. Equal parts tranquil oasis and adventure haven, it truly offers something for everyone. It is a place where productivity and play go hand in hand, where ideas take flight, and where guests leave with a renewed sense of purpose. Clearwater Beach offers miles of gleaming white sand beaches and soothing waves where guests splash in the surf, bask in the glorious sunshine, revel in the sights of the stunning Gulf of Mexico, and explore all that Clearwater Beach has to offer. There is no better place to experience it all than in the Hilton Clearwater Beach.



## ACCOMMODATIONS

416 newly-renovated guest rooms including 12 stunning suites overlooking the Gulf of Mexico, most with balconies

## ACCOMMODATION FEATURES

- Complimentary wireless internet access for all Hilton HHonors guests
- Personal work desk with ergonomic desk chair
- 32" flat panel TV
- Premium-cable TV, with HBO, CNN, and ESPN
- On-demand and recent-release movies
- In-room safe
- Hairdryer, Iron and ironing board
- Coffeemaker with free gourmet coffee and tea
- AM / FM alarm-clock radio with MP3 capability
- Refrigerators

## RESORT AMENITIES & RECREATION

- 10 acres of private, sugar-white sand beach with available private cabanas
- Two beachside pools including whirlpool hot tub
- A myriad of water sports including: parasailing snorkeling, wave runners, and kayaks
- Fun Ride bike and scooter rentals
- Fun Factory Kids Club a supervised kids club ages 4 and up
- State-of-the-art fitness center

## AREA ACTIVITIES

- World-class shopping
- St. John's Pass Village and Boardwalk; a charming turn-of-the-century fishing village teeming with merchants, shops and restaurants
- Captain Memo's Pirate Cruise, enjoy a dolphin sighting cruise, lunch or dinner cruise, shell excursion, or scuba diving

## GUEST SERVICES

- Complimentary weekday newspaper
- Hilton HHonors, frequent guest program
- Automated check-in kiosk
- Concierge staff

## DINING & ENTERTAINMENT

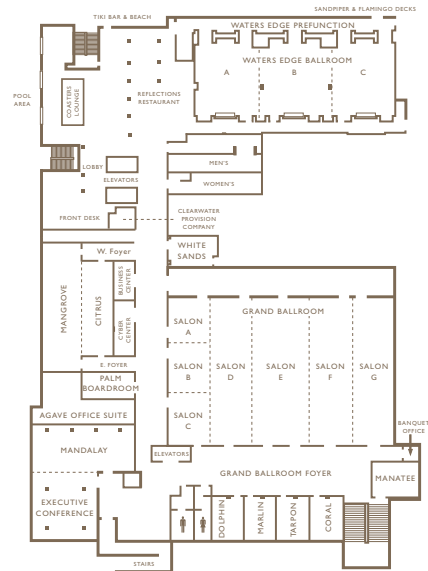
- *Reflections* — a convenient extension of the lobby, serving gourmet fare perfect for a business lunch or friendly dinner
- *Coasters* — all new gulf-view lounge transforms from a coffee bar early in the day to an elegant cocktail and snack spot during the afternoon and evening hours
- *Sand Bar & Grill* at the pool is the place to go for snacks, light lunch or dinner on-the-go
- *Clearwater Provision Company* — an upscale market that offers a variety of food, beverages and more



## MEETINGS & EVENTS

Looking to bring your meeting out into the open air? Hilton Clearwater Beach offers the option of private events on the beach. Treat your guests to the only resort on the central west coast of Florida that offers covered private party decks, and gulf-view spaces that are neatly separated from the rest of the resort, making for a distraction-free environment where productive meetings happen.

- 40,000 square feet of flexible meeting space
- Grand Ballroom accommodates up to 1,200
- iBahn wireless internet in all meeting areas
- 24 hour business center
- Only 20 minutes from St. Petersburg / Clearwater International Airport (PIE)
- Just a half hour from Tampa International Airport (TIA), providing flexibility with flights



Room Name	Dimensions (L x W in feet)	Area (Square feet)	Ceiling (Height)	Classroom (# of people)	Conference (# of people)	Theater (# of people)	Banquet (# of people)	Reception (# of people)	U-Shape (# of people)	Hollow Sq. (# of people)	Exhibit (8 x 10)	Exhibit (10 x 10)
<b>Main Level</b>												
Grand Ballroom	161' x 61'	9,821	–	650	–	1,300	800	1,200	–	–	73	–
Salon ABC	32' x 61'	1,952	9'9"	120	38	200	150	175	50	–	10	–
Salon A	32' x 20'	640	9'9"	27	20	50	40	50	24	–	3	–
Salon B	32' x 20'	640	9'9"	27	20	50	40	50	24	–	3	–
Salon C	32' x 20'	640	9'9"	27	20	50	40	50	24	–	3	–
Salon D	28' x 61'	1,708	14'	96	40	180	110	150	40	–	10	–
Salon E	36' x 61'	2,196	14'	140	40	250	180	200	60	–	12	–
Salon F	32' x 61'	1,952	14'	120	40	200	150	175	50	–	10	–
Salon G	33' x 61'	2,013	9'9"	120	40	200	150	145	50	–	10	–
Foyer	27'6" x 146'3"	4,164	8'10"	–	–	–	–	350	–	–	12	–
Coral	25' x 17'	425	9'9"	21	18	35	24	25	20	–	–	–
Dolphin	25' x 17'	425	9'9"	21	18	35	24	25	20	–	–	–
Marlin	25' x 17'	425	9'9"	21	18	35	24	25	20	–	–	–
Tarpon	25' x 17'	425	9'9"	21	18	35	24	25	20	–	–	–
Manatee	25' x 14'	350	9'9"	18	18	30	16	25	20	–	–	–
Executive Conference	33' x 27'	891	9'9"	27	16	50	50	50	24	–	–	–
Mandalay	54' x 20'	1,080	9'9"	36	32	75	70	75	–	–	–	–
Palm Boardroom	30' x 12'	360	8'10"	–	12	–	12	–	–	–	–	–
Citrus	17' x 38'	646	8'10"	30	40	50	40	50	27	–	–	–
Mangrove	14' x 51'	714	8'10"	48	30	75	60	80	27	–	–	–
White Sands	25'5" x 16'4"	407	8'9"	24	18	44	30	25	21	22	–	–
Waters Edge Ballroom	30'6" x 83'2"	2,708	8'4"	90	–	150	180	300	–	–	16	12
Waters Edge A	30'6" x 26'	856	8'4"	48	24	75	50	85	30	–	–	–
Waters Edge B	30'6" x 30'2"	980	8'4"	48	24	75	50	85	30	–	–	–
Waters Edge C	30'6" x 27'	882	8'4"	48	24	75	50	85	30	–	–	–
Agave Office Suite	33'2" x 41'2"	765	8'	9	12	16	–	–	9	–	–	–
<b>Lower Level</b>												
Meeting Complex	–	20,000	9'9"	–	–	–	–	–	–	–	120	86



400 MANDALAY AVENUE CLEARWATER BEACH, FL 33767  
T. 727.298.1486 F. 727.446.1583 HILTONCLEARWATERBEACH.COM